

## AURA NEA

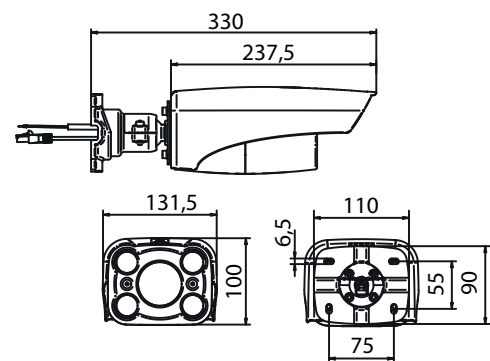
The AURA NEA is a number-plate reading system that can be integrated in ESPAS30 parking systems.

The camera, installed near the ESPAS30-I and ESPAS30-U entry and exit posts, allows vehicles with registered number-plate to enter and exit the car park quickly, without having to show anything at the post.

The use of the plate does not require specific physical supports, thereby offering maximum flexibility.

### FEATURES

- Plate number printed on the entry ticket of occasional users
- Management of season tickets without cards or other tickets, using the number-plate only
- Exit authorisation via the number-plate linked to a paid ticket
- Flexible management of season tickets, with the possibility of using transponder cards, UHF TAGs or number-plate reading, based on the daily needs of the customer. The process is transparent for the customer and fully automated
- Increased security through the unequivocal vehicle number-plate link
- Access to the car park allowed for vehicles with certain pre-registered number-plates
- Possibility of linking several number-plates to the same season ticket holders if they own more than one vehicle. This makes car park access even more transparent.
- It can recognise all European and non-European number-plate formats
- The NEA system can be used without entry and exit stations in car parks for season ticket holders only
- The reading precision level can be set to allow the registration of even relatively worn or dirty number-plates, permitting matching with less characters



### SPECIFICATIONS

- Supply voltage: 12 VDC
- Consumption: 8 W, max. 10 W
- I/O: Opto-isolated input: trigger input: 5 – 12 Vdc
- Opto-isolated output: output 5 – 24Vdc, 20mA max Serial RS232/5
- Weight: 1.6 kg
- Communication interface: Ethernet
- Operating temperature: -25°C +55°C
- IP rating: IP 65
- Conformity: CE, RoHS, FCC

